

Trombone II

DOUGLASS PORTRAIT

Commissioned by the Hopkins Symphony Orchestra

PART I: IN THE BEGINNING

J. Kimo Williams

A ♩ = 60

3 Tremolo Strings Enter 4

1-3 4-7

8 4

8-15 16-19

B -Birth and Bondage-

6

20-25

2 **C** 6

26-27 28-33

2 **D** 4

34-35 36-39

E ♩ = 80

3

40-42

mp *mf*

-Awakening of Mind-

47

51

56 *Rit.* **F** Solo Trpt with Narrator 5

mp 60-64

Trombone II

5

65-69

Detailed description: A single musical staff in bass clef with a key signature of two flats and a 4/4 time signature. The staff contains a solid black bar representing a whole rest for measures 65 through 69.

Passage: -Flight To Freedom-

G ♩ = 150

2

Woodwind Tutti

5

70-71

72-76

Detailed description: A musical staff in bass clef with a key signature of two flats and a 4/4 time signature. It is divided into two sections. The first section, measures 70-71, is marked with a '2' and contains a solid black bar. The second section, measures 72-76, is marked with a '5' and contains a solid black bar. Above the staff, a tempo marking 'G ♩ = 150' is shown in a box, and the instruction 'Woodwind Tutti' is centered between the two sections.

5

H Snare Enters

77-81

Detailed description: A musical staff in bass clef with a key signature of two flats. It contains a solid black bar for measures 77-81. To the right of the staff, a box containing the letter 'H' is positioned above the text 'Snare Enters', which is aligned with the end of the rest.

5

83-87

Detailed description: A musical staff in bass clef with a key signature of two flats. It contains a solid black bar for measures 83-87.

5

88-92

Detailed description: A musical staff in bass clef with a key signature of two flats. It contains a solid black bar for measures 88-92.

3

94-96

mf

Detailed description: A musical staff in bass clef with a key signature of two flats. It begins with a solid black bar for measures 94-96, marked with a '3'. This is followed by a double bar line and a vertical bar. The music then continues with eighth notes, some with accents (>), and a dynamic marking of *mf*.

100

Detailed description: A musical staff in bass clef with a key signature of two flats. It begins with a measure number '100' and contains eighth notes with accents (>).

103

Detailed description: A musical staff in bass clef with a key signature of two flats. It begins with a measure number '103' and contains eighth notes with accents (>).

106 **J** *Bsns and Hrns 8th solo Rhythm*

107-108 *f*

113

-Free From Bondage-

♩ = 120

117 **K** *Piano Enters*

poco dim. *p* 119-125

L **8**

126-133

2 **M** **4**

134-135 136-139

3 **N** *WW soli* **3**

140-142 143-145

4

146-149

3 *Strings Tremolo* **2** **O** *Basses Glissado* **8** **4**

150-152 153-154 155-162 163-166

4 **P** *Woodwinds melody w/hrns* **3**

167-170 171-173

6

174-179

Passage: -Across The Atlantic-

Q **2**
 180-181 *mf*

186

Bsns and Hrns 8th note rhythm **R**
 191-193 *ff*

198 **5**
 200-204 *mf*

S ♩ = 40 -An Irish Welcome-
 205 *mf mp mf mp p*

T Irish Tune String Melody **3**
 213-215

5 **U** Piano Enters **6**
 216-220 221-226

2 **V** **4**
 227-228 229-232

5
 233-237

Trombone II

$\text{♩} = 150$ **Passage: - A Return To America Fully "Woke"-**
4

W

Trumpets Enter

238-241

244

X

Y

My Country Tis of Thee

260

265

poco dim.

5

270-274

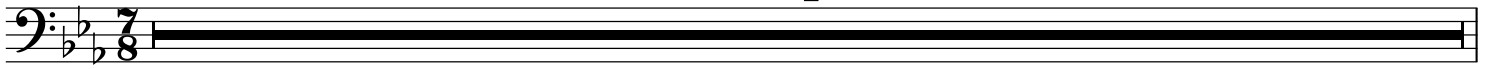
4

275-278

PART II: AMERICA A NEW LIFE

Z $\text{♩} = 80$

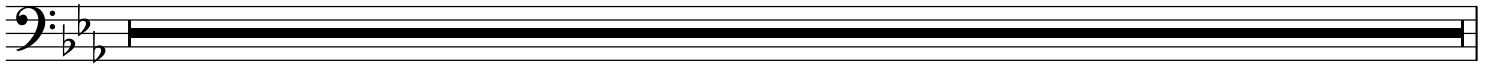
4



280-283

AA *Strings melodic line*

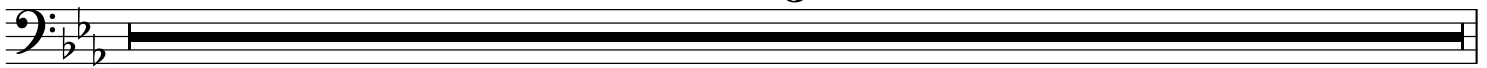
4



284-287

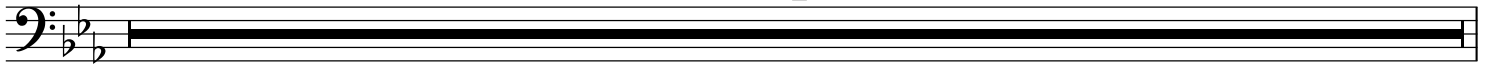
BB *Piano Enters*

5



288-292

4



293-296

3

CC



297-299

mf

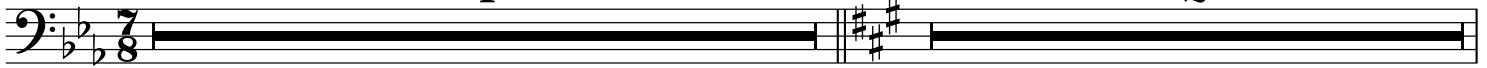


DD

$\text{♩} = 120$

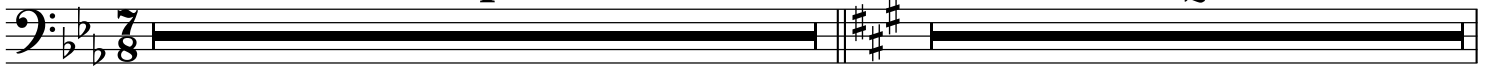
-The Moral Hypocrisy-

4



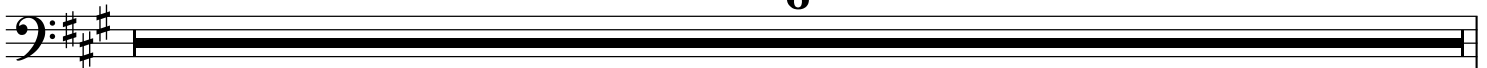
310-313

2



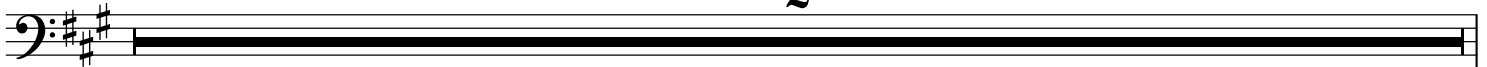
314-315

6



316-321

2



322-323

EE High Strings Background **3**

324-326 *mp* *f*

FF **2** *Melody Enters* **8**

329-330 331-338

GG **2** **3**

339-340 341-343

5

344-348

-The Cries and the Sermons-

HH Percussion Solo *ff*

349 *ff*

355

-The Woman-

II $\text{♩} = 110$ **2** CUP MUTE *mf* *mp*

359 361-362 *mf* *mp*

Background Enters

JJ

365

KK *Melody* *f*

369 *f*

Trombone II

4 LL 3

373-376 377-379

3

Strings Tremolo

380-382 *mp* *p* *f*

MM *open* -Your 4th of July-

391 8

392-399

2

401-402 *mp* *mf*

$\text{♩} = 55$

405

cresc. *ff*

411

mf *fff*